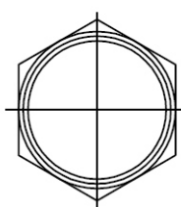
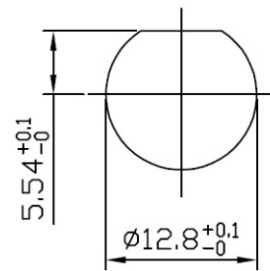


LOCK WASHER



1/2-28UNEF-2B
CLAMP NUT



RECOMMENDED MOUNTING HOLE
 MAXIMUM PANEL THICKNESS: 5.5MM
 RECOMMENDED MOUNTING TORQUE:
 12 INCH-POUNDS MAX

BNC-JR15WFM-75-LF
 LEADFREE
 RoHS Compliant

NO	DESCRIPTION	MATERIAL	FINISH	QTY
7	NUT	BRASS	NICKEL	1
6	WASHER	STEEL	NICKEL	1
5	SOLDER TAIL	COPPER WIRE	TIN LEAD	1
4	MOUNTING POST	BRONZE	TIN LEAD	1
3	INSULATOR	DELFIN	NONE	1
2	BODY	ZINC ALLOY	NICKEL	1
1	CENTER CONTACT	BRONZE	GOLD	1



PART NO. BNC-JR15WFM-75

DWG NO. BNC-JR15WFM-75

FILE NO.

UNIT / mm

SCALE 1:1

CHECKED BY CY

DRAWING BY

PROJECTION

TOLERANCES ARE

.X ± 0.2
 .XX ± 0.1
 .XXX ±
 AWG

DESCRIPTION:

75 OHM BNC R/A PCB
 MOUNT JACKS, METAL BODY

AREA

REVISIONS

HK

DATE

焜倫股份有限公司